The background is a faded, artistic illustration of a park master plan. It features a central circular area with a radial pattern, possibly representing a garden or a central plaza. Surrounding this are various paths, green spaces with trees, and a building on the right side. The word "Renovated" is written in a light blue font near the building. The entire illustration is in a light, sketchy style with muted colors.

OAK MOUNTAIN

P a r k M a s t e r P l a n

Oak Mountain

M a s t e r P l a n

Site Analysis:

Oak Mountain has some of the more interesting challenges of all the park sites. A memorandum of agreement between Southwire and Carroll County calls for the minimization of disturbance on the site due to past environmental mitigation. However, minimal disturbance is allowed for construction of appropriate improvements.

The southern section of the site consists of mixed pine and hardwood forests with a large grassy area bordering Stripling Chapel Road. The main road in this section traverses a high ridge providing views to the Chattahoochee River basin. Retention ponds are located at the edge of the woodland within existing draws and swales.

The Oak Mountain Academy and the Folds House, predating the Academy, are located in the northern section of the site. The old school facilities and tennis courts are located in open fields, and are surrounded by mixed hardwoods. A spring forms a stream that flows into a drained lake bed and then flows off the site on the western edge of the property. Bottomland hardwood with vegetation tolerating wetland conditions abuts the lake area. The level areas surrounding the existing facilities provide the best opportunity for potential park facility development. Additionally, multi-use trails and hiking paths can be routed through woodlands.

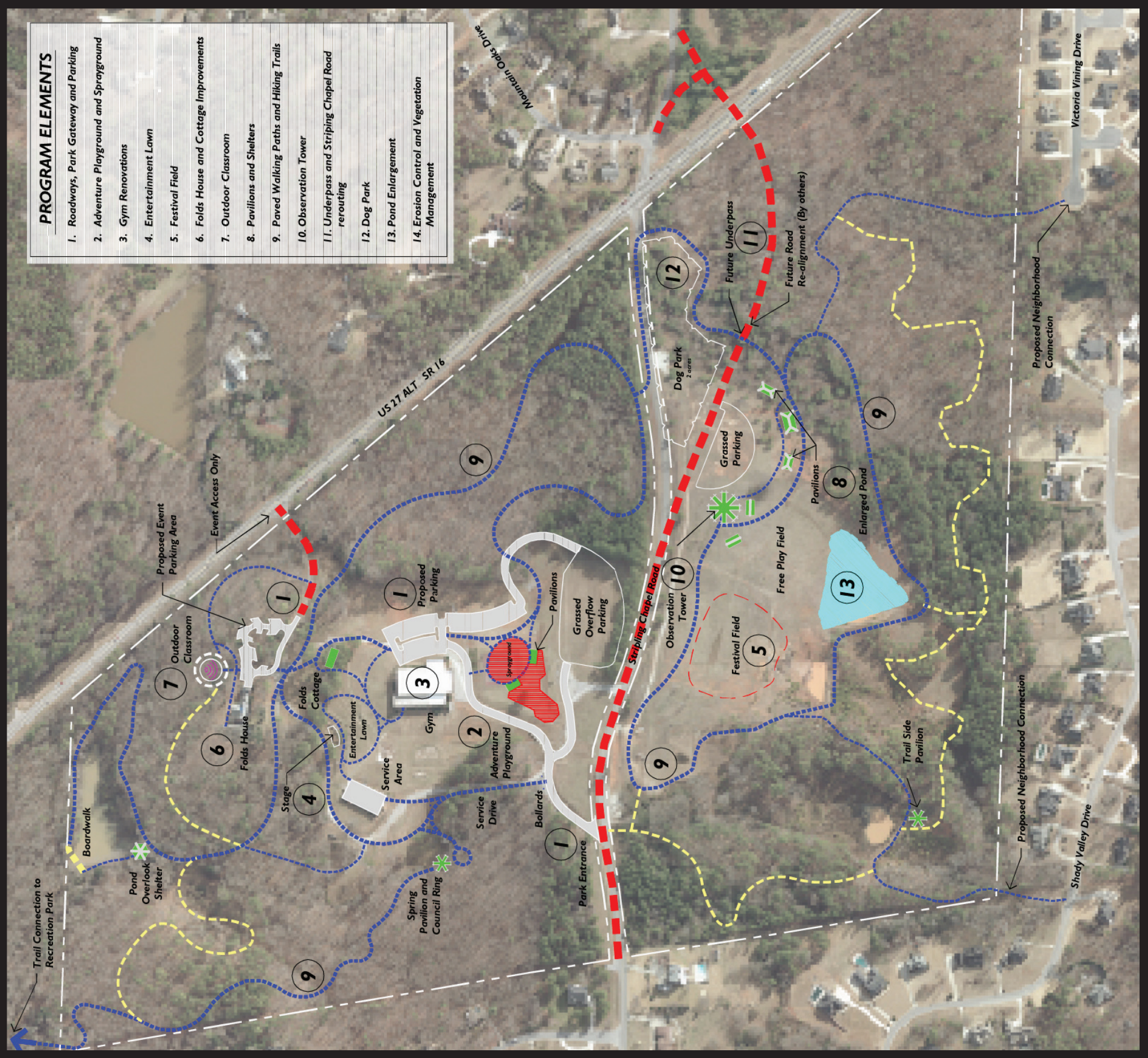
Summary:

The design team decided to concentrate the main program facilities on the existing flattest slopes and cleared areas. The wooded slopes will be preserved except for trail construction. This layout prevents wholesale tree clearing and avoids most grading that would violate the deed restrictions in place.

Program Components:

Included here are descriptions and images of the proposed park program elements as defined by the master plan. The following list includes elements recommended for the park, but is not limited to these elements.

- Roadways and parking
- Adventure playground and sprayground
- Gym renovations
- Entertainment lawn
- Festival field
- Folds House and cottage improvements
- Outdoor classroom
- Pavilions and shelters
- Paved walking paths and hiking trails (currently under construction)
- Off-site trail connections
- Boardwalk and wetland overlook
- Observation tower
- Underpass and Stripling Chapel Road rerouting
- Dog park
- Pond enlargement
- Erosion control and vegetation management

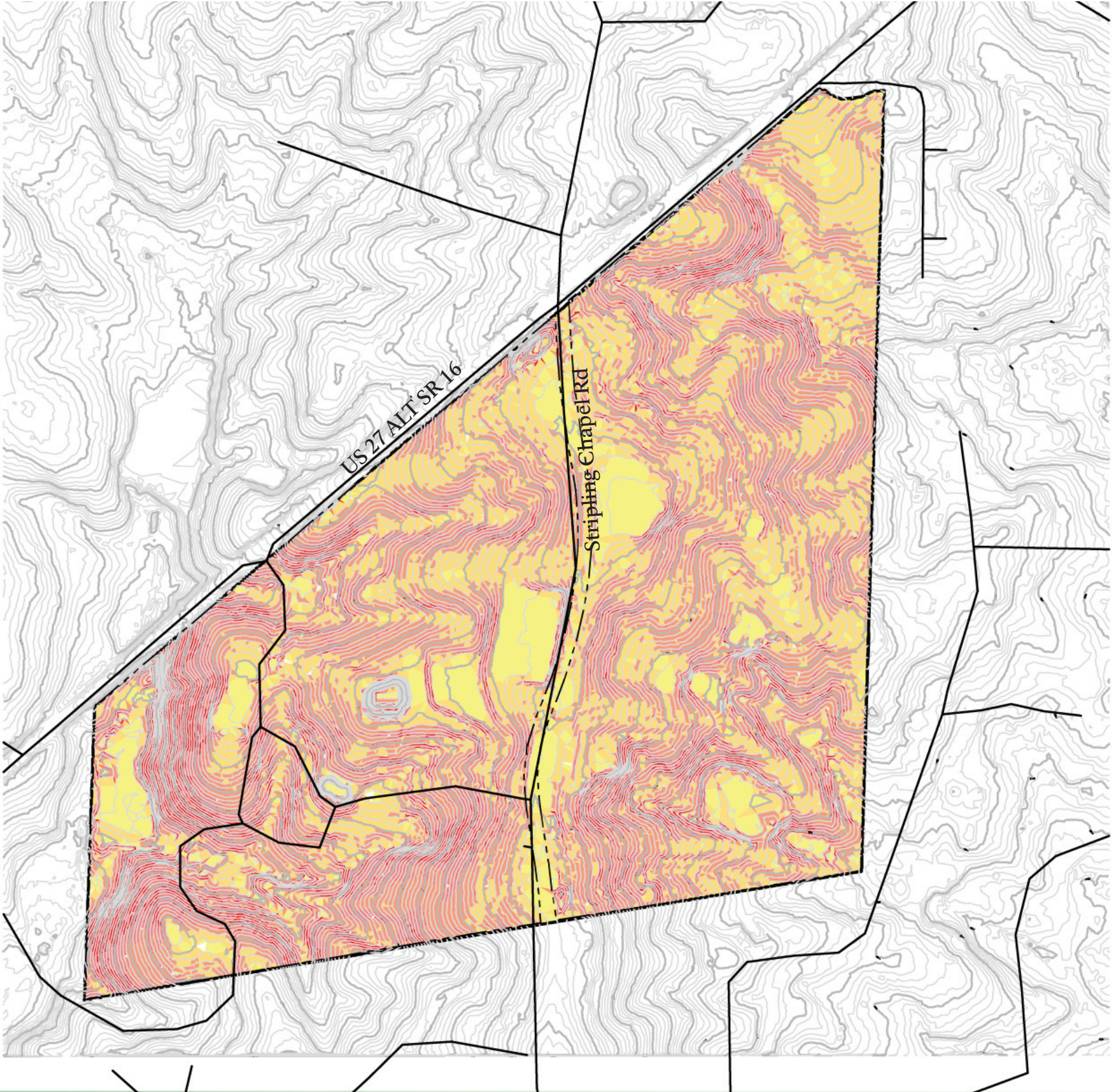


LEGEND

- Existing Unpaved Roads
- Existing Paved Roads
- Proposed Parking Area

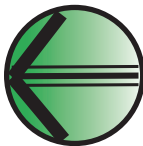
- Park Features
- Outdoor Classroom / Amphitheater
- Fenced Area

- Multi-use Hiking / Equestrian / Mountain bike trails
- Asphalt Path / Bike Trail
- Connecting Paths
- Pavilion/Structure



Color Range

- 0-5%
- 5-10%
- 10-15%
- 15-20%
- 20% & above





View of the existing Folds House



View of existing gym to be renovated



View of existing gazebo and the Folds House



View of existing tennis courts