

LITTLE TALLAPOOSA

P a r k M a s t e r P l a n

Lake

Little Tallapoosa

M a s t e r P l a n

Site Analysis:

The Little Tallapoosa (aka Sharp's Creek tract) site lies off of State Route 113 between Carrollton and Temple. The site is almost entirely wooded. Large portions of the site are planted in pine for pulpwood production. The site is adjacent several properties owned by the Carroll County School Board, including Sharp's Creek Elementary School. A pipeline easement traverses the site, and borders the Little Tallapoosa River. An out parcel of the site is located at Muse Bridge Road where it crosses the Little Tallapoosa. The site is relatively level, except for a steep drop off into the floodplain of the River. This floodplain is made up of wet meadows and wetland areas, with hardwood forest encompassing large areas of the floodplain. The Little Tallapoosa River itself was channelized in this area for agricultural purposes, and is very shallow during dry periods, making canoeing difficult at best. Central to the site is a large pond, which will serve as a scenic amenity for the park plan.

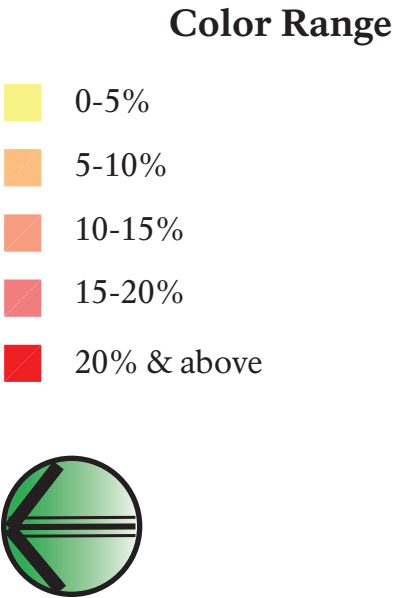
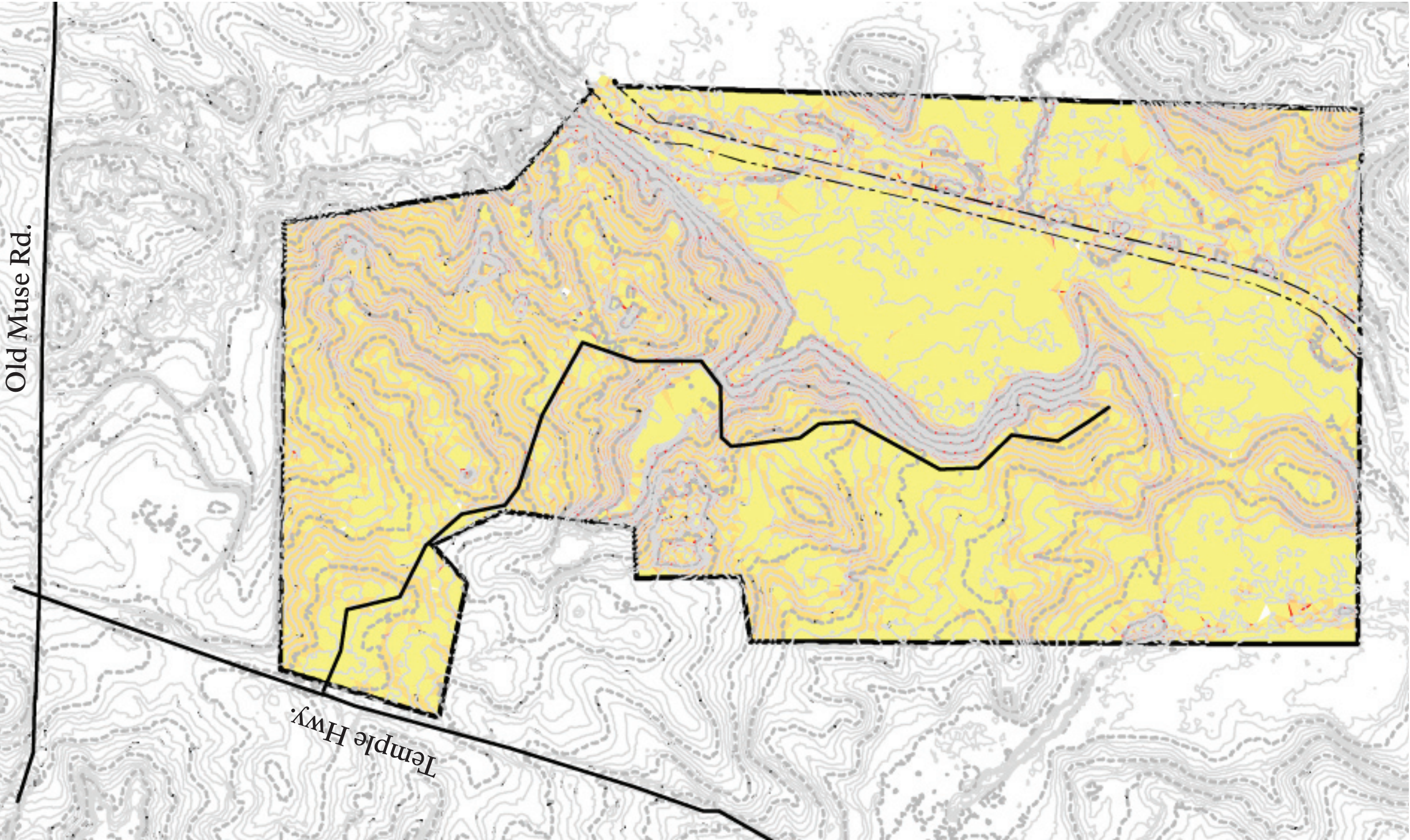
Summary:

The Little Tallapoosa site has the most potential for developing amenity areas for community use. Main program facilities are planned at the center of the site in relatively cleared areas around the existing pond. The edge of the drop off into the wetland and floodplain area was determined the best location for a paved trail loop, providing scenic views toward the river. A trail connection is proposed between the out parcel and the main site through the school board property to better link a canoe launch with the main park. To provide open areas, clearing the planted pine stands and converting these areas into meadows is recommended when the pines reach harvest levels, the proceeds of which could go to park development.

Program Components:

The extensive acreage of Little Tallapoosa will afford plenty of area for the development of necessary park programs. Development is restricted to 15% of the property due to its official designation as a greenspace area. The following components are included in the proposed park at Little Tallapoosa:

- Entry road, gateway and parking area
- Pine harvesting and clearing for pasture
- Community center/ park office
- Paved bike and walking/ hiking trail system
- Playground/ sprayground
- Arboretum and educational nature trails
- Disc golf course
- Pavilions and picnic shelters
- Canoe launches
- Outdoor classrooms
- Observation tower
- Archery range
- Developed campground
- Backcountry camping
- RV park and campground amenities





View of existing pond



View of existing access road



View of typical wooded wetland area

Lake